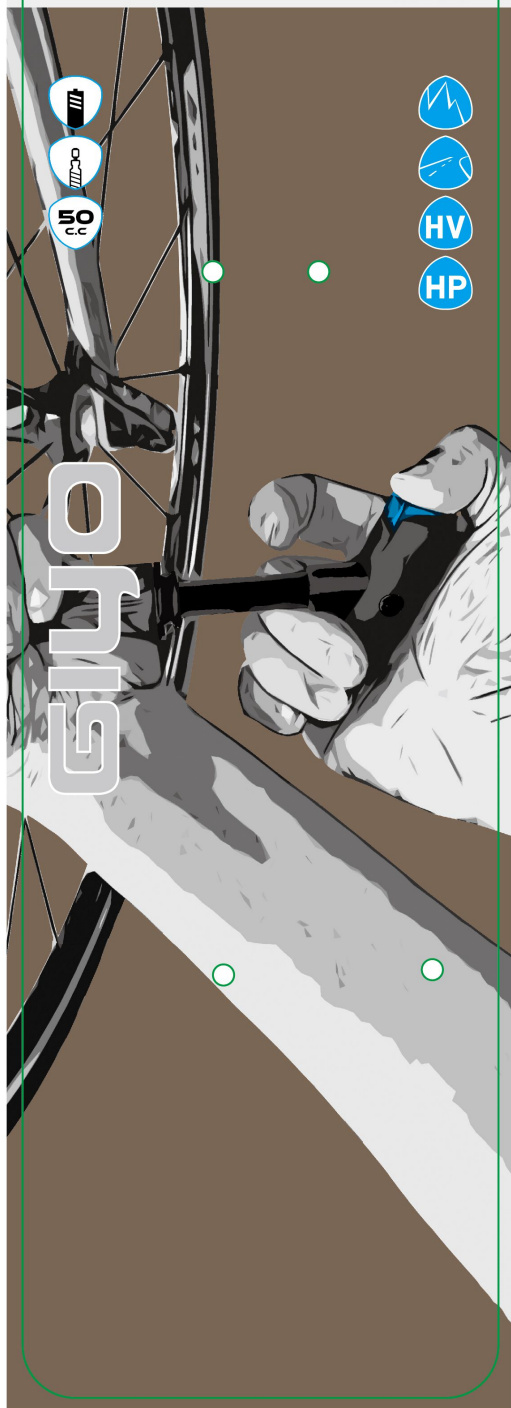


HV/HP MINI PUMP W/SCREW-IN TWIN-VALVE

80/120 PSI



HV/HP MINI PUMP W/SCREW-IN TWIN-VALVE

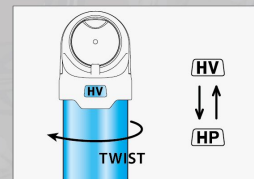
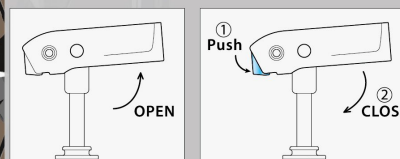
80/120 PSI

GP-985D

80psi / 120psi

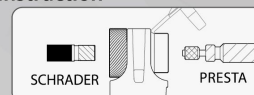
- Anti-pinch T-Handle w/safety lock
- Switchable mode for High Volume and High Pressure
- Screw-in Twin-Valve for Presta and Schrader

- Aluminum barrel

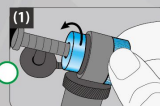


▲ Switching between High Pressure or High Volume mode

Instruction

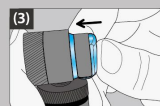


▲ Screw-in Twin-Valve



(2) Unscrew the pump head and detach from the valve.

Choose required valve and screw the pump head on the valve, then inflate to desired pressure.



Put dust cap back to Presta valve side.