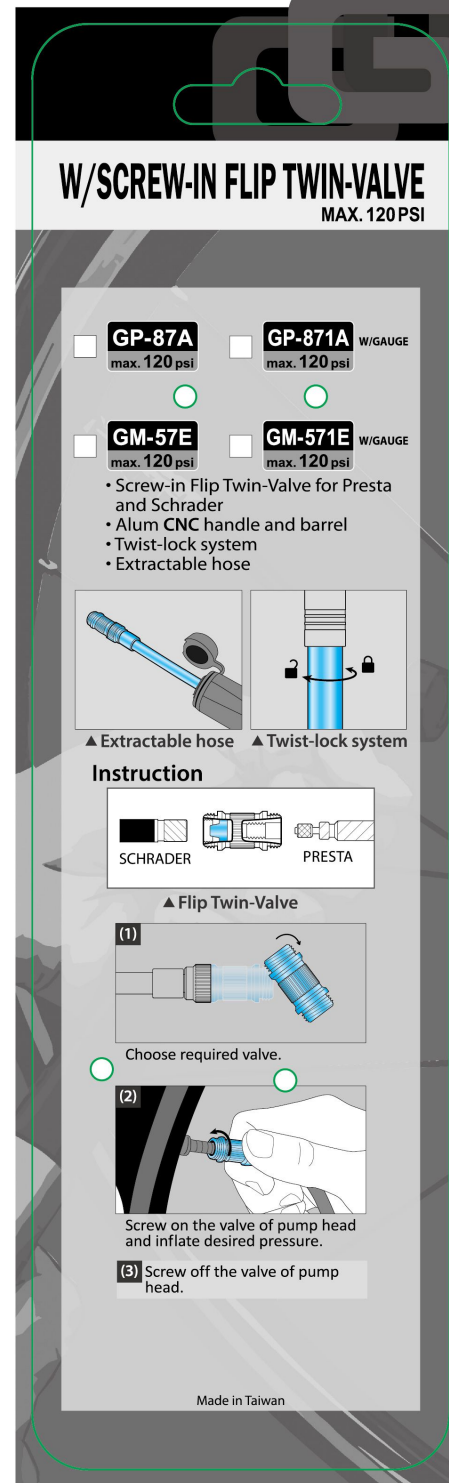


FLIP TWIN-VALVE

MAX. 120PSI



ohiso



W/SCREW-IN FLIP TWIN-VALVE

MAX. 120PSI

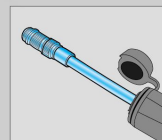
GP-87A
max. 120 psi

GP-871A W/GAUGE
max. 120 psi

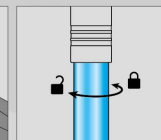
GM-57E
max. 120 psi

GM-571E W/GAUGE
max. 120 psi

- Screw-in Flip Twin-Valve for Presta and Schrader
- Alum CNC handle and barrel
- Twist-lock system
- Extractable hose

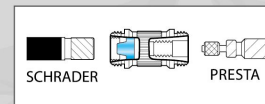


▲ Extractable hose

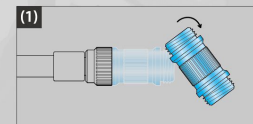


▲ Twist-lock system

Instruction



▲ Flip Twin-Valve



(1) Choose required valve.



Screw on the valve of pump head and inflate desired pressure.

(3) Screw off the valve of pump head.