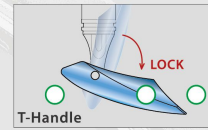


ALUM MINI PUMP W/ T-HANDLE



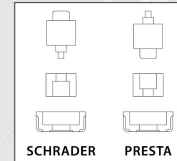
- GP-09** max. 100 psi
- GP-91** max. 100 psi W/GAUGE
- Aluminum barrel
  - T-Handle
  - Reversible for Presta and Schrader



T-Handle

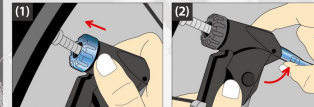
GP-09/GP-91/GP-09T/GP-92T

## Instruction



SCHRADER

PRESTA



(1) Choose correct pump valve and insert it to tire valve.

(2) Lift up the lever to lock the valve, then inflate to desired pressure.

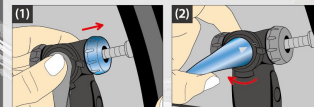
(3) Unlock the lever and take the pump head off the tire.

- GP-09T** max. 100 psi
- GP-92T** max. 120 psi 2-Way
- Aluminum barrel
  - 2-Tone T-Handle
  - Twin-Valve with Thumb-Lock lever

## Instruction



▲ Twin-Valve



(1) Choose required valve and press the pump head onto the tire valve.

(2) Push the lever to lock the valve, then inflate to desired pressure.

(3) Push the lever back and take the pump head off the tire.

Made in Taiwan