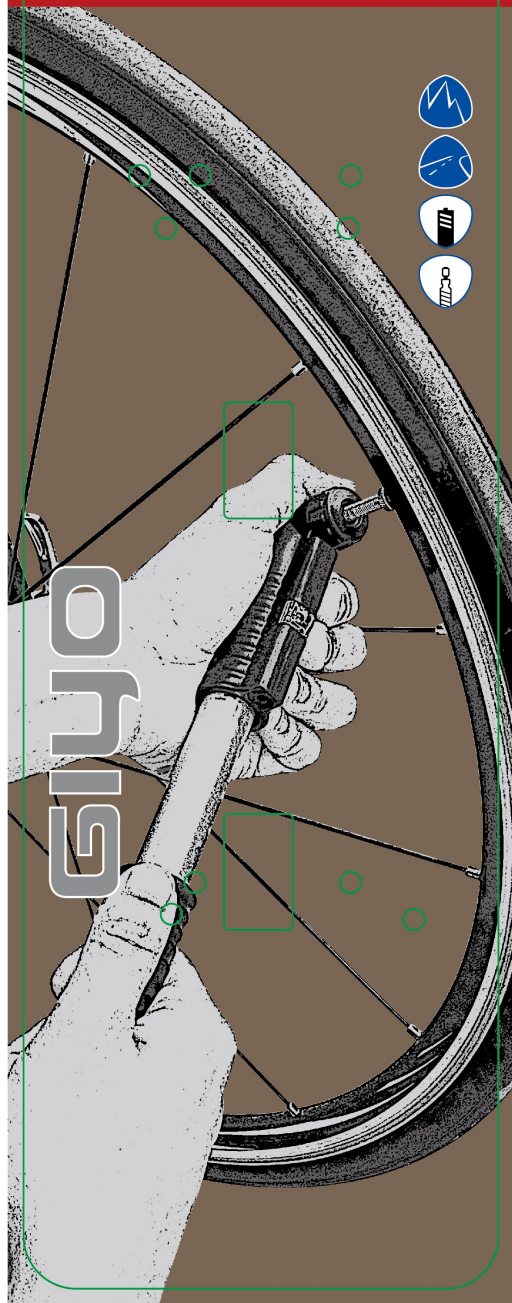


2-WAY MINI PUMP

MAX. 100 PSI



GIYO

2-WAY MINI PUMP

MAX. 100 PSI

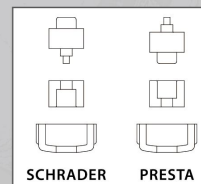
- GP-02**
max. 100 psi
- GP-21** W/GAUGE
max. 100 psi
- Aluminum barrel
- Turnable handle
- Reversible for Presta and Schrader
- GP-26**
max. 100 psi
- Ergonomic Kraton grip for better holding
- Reversible for Presta and Schrader



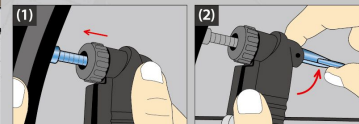
Turnable Handle

GP-02/GP-21

Instruction



SCHRADER PRESTA



(1) Insert pump head to tire valve.

(2) Flip up the lever to securely hold the valve, then inflate.

(3) After inflating desired pressure, unlock the lever and take the pump head off the tire.

Made in Taiwan