

FIRST BICYCLE PUMP CAN CHANGE PRESSURE

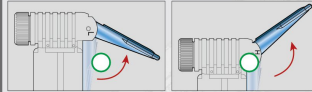
MAX. 80/120PSI



GP-01

80psi / 120psi

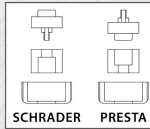
- Easy-to-use positive lock lever switches between high and low pressure settings
- Highly-efficient 2-barrel pumping design
- Fits Presta and Schrader valves



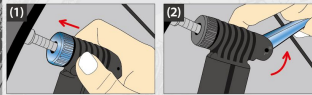
▲ "L", Big Volume

▲ "H", High Pressure

Instruction



SCHRADER PRESTA



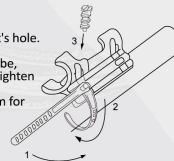
(1) Choose required valve and press the pump head onto the tire valve.

(2) Lift up the lever to High Volume or High Pressure position mode, then inflate to desired pressure.

(3) Push the lever down and remove the pump.

INSTRUCTION

1. Belt insert to bracket's hole.
 2. Turn 90 degree.
 3. Round the frame tube, use screw on belt, tighten the belt on frame.
- (Belt mounting system for additional charge)



Made in Taiwan