

ALUM MICRO FLOOR PUMP

GIYO

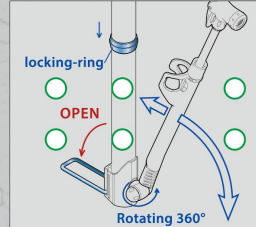


GM-07A
max. 120 psi

GM-73
max. 120 psi

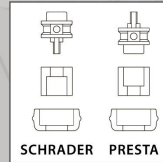
GM-71A W/GAUGE
max. 120 psi

- Aluminum barrel and handle
- Extractable hose
- Reversible for Presta and Schrader

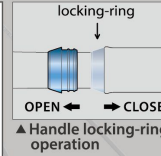


GM-07A/GM-71A

Instruction



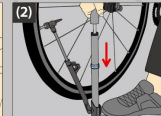
SCHRADER PRESTA



▲ Handle locking-ring operation



(1) Engage to the valve of tire. Lift up the lever to lock the valve.



(2) Push locking-ring toward pump head direction until handle won't touch locking-ring, then inflate.

(3) After inflating desired pressure, unlock the lever and take the pump head off the tire.

GM-731
max. 120 psi

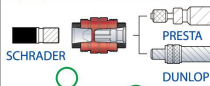
GM-74 T-Handle
max. 140 psi

GM-731I W/GAUGE
max. 120 psi

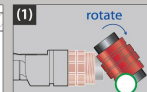
GM-741I W/GAUGE T-Handle
max. 140 psi

- Aluminum barrel and handle
- Universal hose system
- Thumb-Lock Clever-Twin-Valve for Schrader, Presta and Dunlop

Instruction

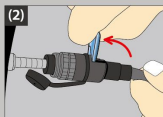


SCHRADER PRESTA DUNLOP

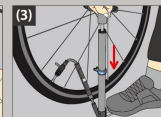


(1) Choose required valve.

▲ Clever-Twin-Valve



(2) Engage to the valve of tire. Lift up the lever to lock the valve.



(3) Push locking-ring toward pump head direction until handle won't touch locking-ring, then inflate.

(4) After inflating desired pressure, unlock the lever and take the pump head off the tire.