

MICRO FLOOR PUMP



GIYO

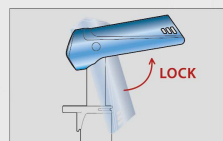
MICRO FLOOR PUMP

GM-64
max. 140 psi

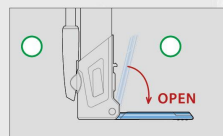
- Aluminum barrel
- T-Handle for better inflating
- Reversible Presta and Schrader

GM-641 W/GAUGE
max. 140 psi

- T-Handle for better inflating
- Reversible Presta and Schrader

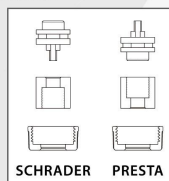


▲ T-HANDLE

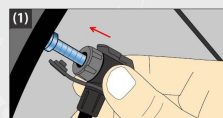


▲ FOOT PAD

Instruction



SCHRADER PRESTA



Insert pump head to tire valve.



Flip up the lever to securely hold the valve, then inflate.

(3) After inflating desired pressure, unlock the lever and take the pump head off the tire.