

GIYO ALUM MINI FLOOR PUMP

MAX. 120 PSI



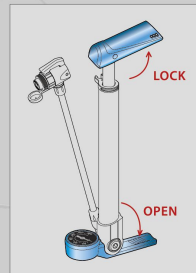
ALUM MINI FLOOR PUMP

MAX. 120 PSI

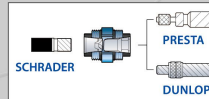
GM-642

max. 120 psi

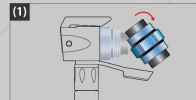
- 1.5" Dial gauge
- Foldable one piece gauge and pedal
- Aluminum barrel
- Ergonomic T-Handle
- Clever-Twin-Valve for Schrader, Presta and Dunlop



Instruction



▲ Clever-Twin-Valve



Choose correct pump valve.



Insert pump head to tire valve.



Flip up the lever to securely hold the valve, then inflate.

(4) After inflating desired pressure, unlock the lever and take the pump head off the tire.