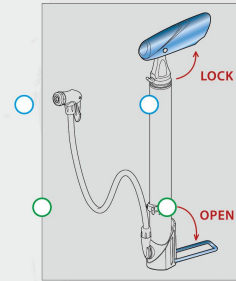
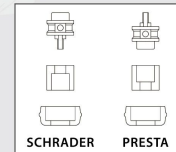


GM-06 max. 140 psi **GM-61** W/GAUGE max. 140 psi

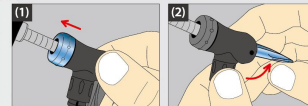
- Aluminum barrel
- 2-Tone T-Handle
- Extra longer hose
- Reversible Presta and Schrader



Instruction



SCHRADER PRESTA



(1) Choose correct pump valve and insert it to tire valve.

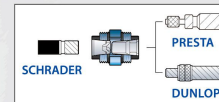
(2) Lift up the lever to lock the valve, then inflate to desired pressure.

(3) Unlock the lever and take the pump head off the tire.

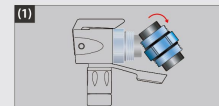
GM-631 max. 140 psi

- Hi-polish aluminum barrel and T-Handle
- CNC gauge
- Extra longer hose
- Thumb-Lock Clever-Twin-Valve for Schrader, Presta and Dunlop

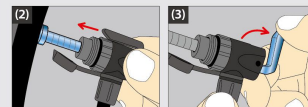
Instruction



▲ Clever-Twin-Valve



(1) Choose correct pump valve.



(2) Insert pump head to tire valve.

(3) Flip up the lever to securely hold the valve, then inflate.

(4) After inflating desired pressure, unlock the lever and take the pump head off the tire.

Made in Taiwan