

# ALUM MINI PUMP

GIYO

- GM-04S** TELESCOPE     
max. 120 psi
- CNC aluminum parts
- Reversible for Presta and Schrader

### Instruction



Hold tight by using palm and thumb hold "pump and tire" together.

- GM-04L** TELESCOPE  
- max. 120 psi

- GM-04P** TELESCOPE  
- max. 120 psi

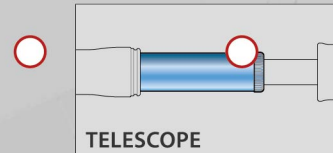
- Thumb-Lock lever
- Presta only

- GM-43SL**     
max. 80 psi

- GM-48L**     
max. 80 psi

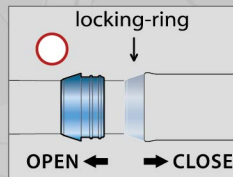
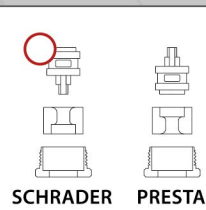
- GM-49L**     
max. 120 psi

- Thumb-Lock lever
- Reversible for Presta and Schrader

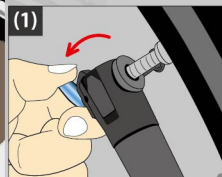


TELESCOPE  
GM-04S/GM-04L/GM-04P

### Instruction



▲ Handle locking-ring operation



(1) Engage to the valve of tire. Push down the lever to lock the valve.



(2) Push locking-ring toward pump head direction until handle won't touch locking-ring, then inflate.

(3) After inflating desired pressure, unlock the lever and take the pump head off the tire.

Made in Taiwan