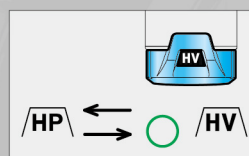


**GM-44PL**

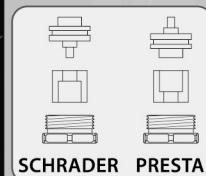
80psi / 120psi

- Compact size with big volume
- Switchable mode for **High Volume** and **High Pressure**
- Alum lever, valve cap and barrel
- Reversible Presta and Schrader
- Light weight 59g



◀ Switch mode for High Volume and High Pressure

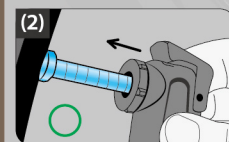
**Instruction**



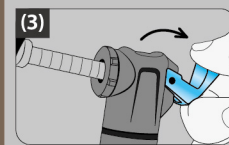
SCHRADER PRESTA



(1) Choose High Volume/High Pressure.



(2) Insert the valve into the pump head



(3) Lift the lever up to lock the valve and inflate to the required pressure.

(4) Press the lever down to unlock the valve and remove the pump from the tire.

Made in Taiwan