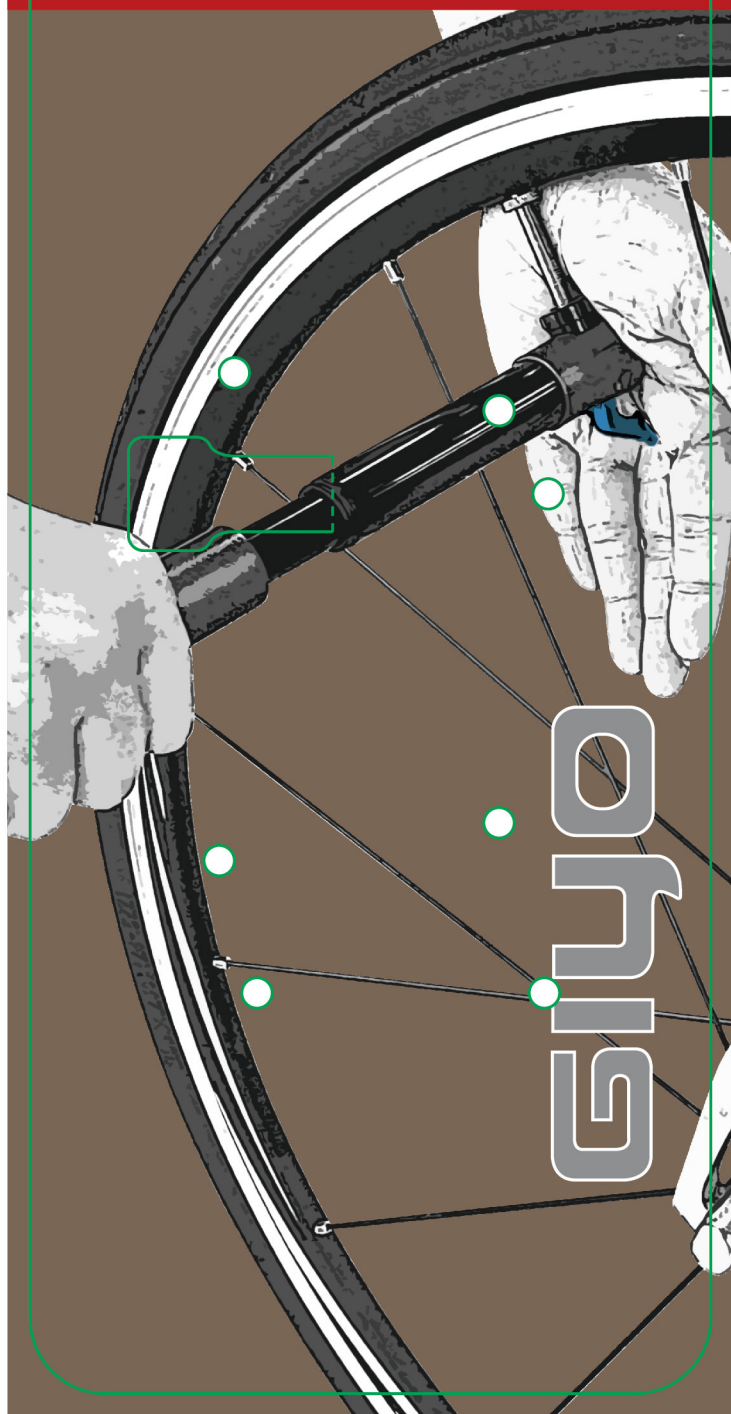


# POCKET ALUM MINI PUMP



**GM-04PL**  
max. 120 psi



**GM-04LT** TELESCOPE  
max. 120 psi



- CNC aluminum mini pump
- Aluminum Thumb-Lock lever
- Fit for Presta and Dunlop

**GM-43PL**  
max. 80 psi



**GM-43LT** TELESCOPE  
max. 80 psi

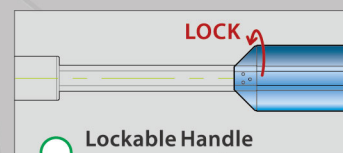


- CNC aluminum mini pump
- Aluminum Thumb-Lock lever
- Fit for Schrader, Presta and  Dunlop

**GM-42**  
max. 100 psi



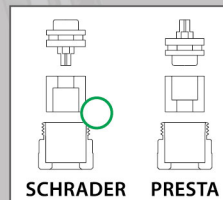
- Lockable aluminum handle
- Reversible for Presta and Schrader



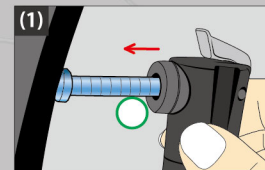
Lockable Handle

GM-42

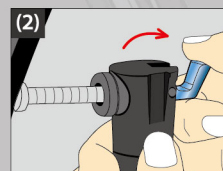
## Instruction



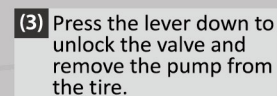
SCHRADER PRESTA



(1) Insert the valve into the pump head



(2) Lift the lever up to lock the valve and inflate to the required pressure.



(3) Press the lever down to unlock the valve and remove the pump from the tire.

Made in Taiwan