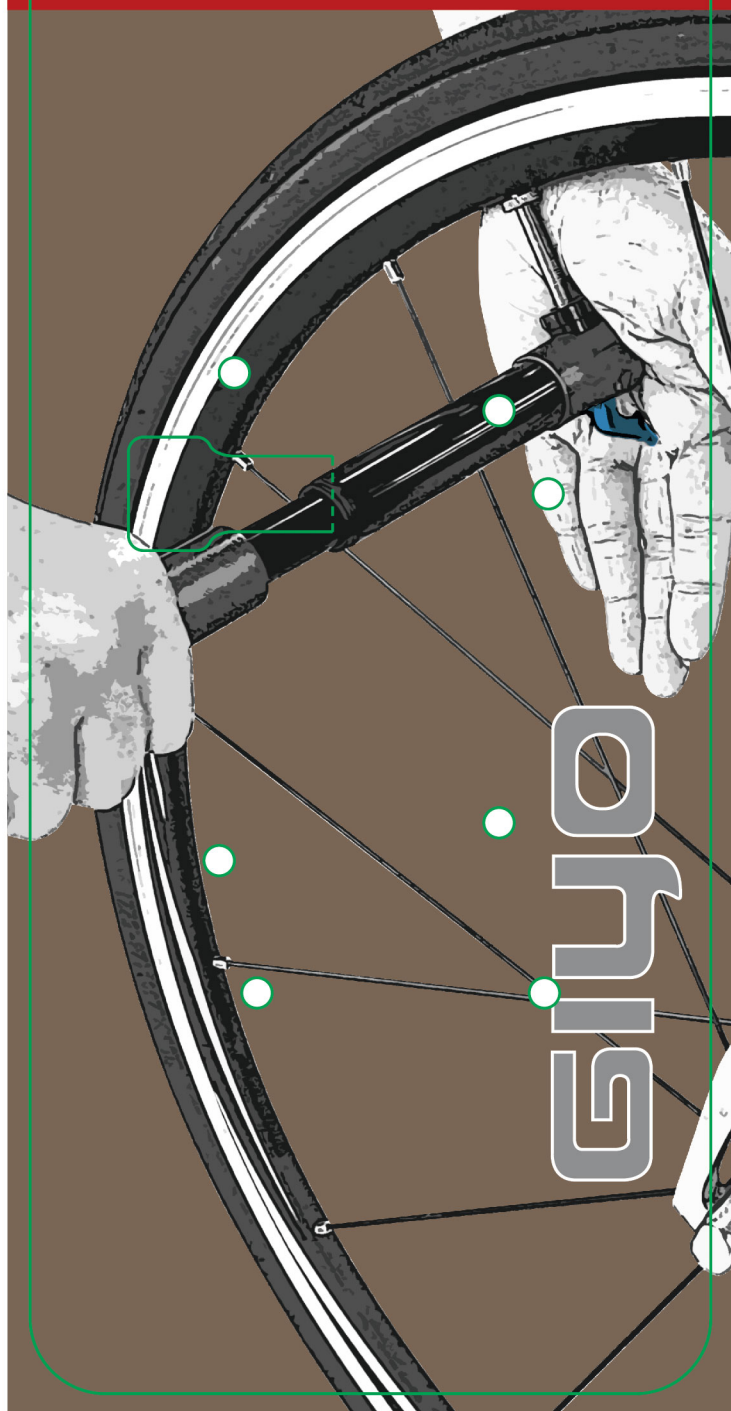


POCKET ALUM MINI PUMP



GM-04PL
max. 120 psi



GM-04LT TELESCOPE
max. 120 psi



- CNC aluminum mini pump
- Aluminum Thumb-Lock lever
- Fit for Presta and Dunlop

GM-43PL
max. 80 psi



GM-43LT TELESCOPE
max. 80 psi

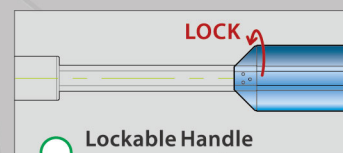


- CNC aluminum mini pump
- Aluminum Thumb-Lock lever
- Fit for Schrader, Presta and Dunlop

GM-42
max. 100 psi



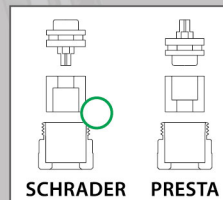
- Lockable aluminum handle
- Reversible for Presta and Schrader



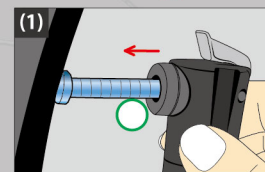
Lockable Handle

GM-42

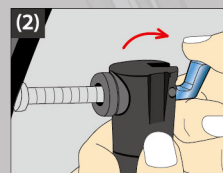
Instruction



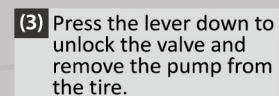
SCHRADER PRESTA



(1) Insert the valve into the pump head



(2) Lift the lever up to lock the valve and inflate to the required pressure.



(3) Press the lever down to unlock the valve and remove the pump from the tire.

Made in Taiwan