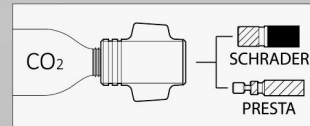


# CO<sub>2</sub> INFLATOR W/TUBELESS REPAIR KIT

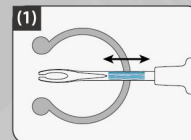


## GLC-02

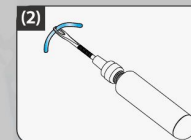
- One piece CNC alum inflator body
- Inflating speed controlled by twisting the CO<sub>2</sub> cartridge
- Fit for CO<sub>2</sub> cartridge w/thread
- Fit for Presta and Schrader
- Tubeless repair kit: 3pcs Ø1.5xL50mm  
3pcs Ø3.5xL50mm  
and knurled needle stored in the case



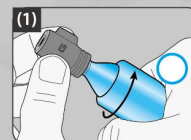
## INSTRUCTION



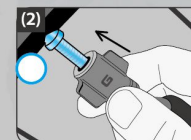
Clean the puncture area and remove the debris



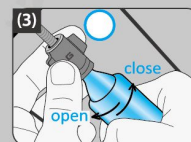
Assemble the tool to repair the puncture hole



Screw on the cartridge to the end to punch it.



Engage into the tire valve.



Twist the CO<sub>2</sub> cartridge to control the CO<sub>2</sub> air-flow.

## CAUTION

1. If CO<sub>2</sub> cartridge still charged with gas, it must discharge completely the CO<sub>2</sub> cartridge before removal.
2. When opening the CO<sub>2</sub> cartridge, point the inflator head away from yourself and others.

Made in Taiwan