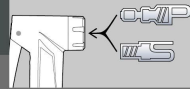
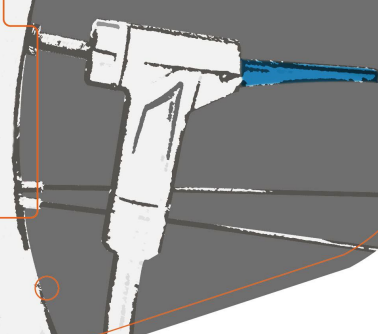




ENGAGED AUTO POWER-ON DIGITAL GAUGE FLOOR PUMP



CLEVER VALVE



GF-65 max. 180 psi

- Easy to read lower pressure
- 0.5 psi digit gap shown on display board
- Hi-tech LCD display panel digital gauge
- Clever-Twin-Valve for Schrader, Presta and Dunlop

GF-65E max. 180 psi

- Easy to read lower pressure
- 0.5 psi digit gap shown on display board
- Hi-tech LCD display panel digital gauge
- Clever Valve: No more reverse for Presta and Schrader

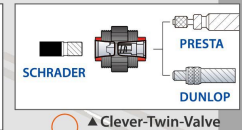
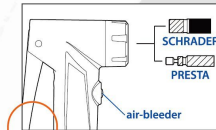
GF-65SE max. 180 psi

- Precise in low pressure stage
- 0.5 psi digit gap shown on display board
- Hi-tech LCD display panel digital gauge
- Clever Valve: No more reverse for Presta and Schrader with air-bleeder

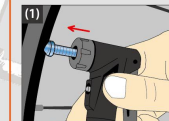
GF-91 max. 200 psi

- Easy to read lower pressure
- 0.5 psi digit gap shown on display board
- Hi-tech LCD display panel digital gauge
- Alum handle and barrel with alum sleeve
- Thumb-Lock Clever-Twin-Valve for Schrader, Presta and Dunlop W/air-bleeder

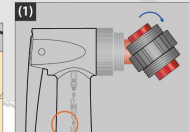
INSTRUCTION



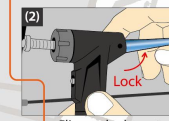
▲ Clever Valve



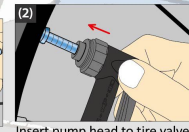
Insert pump head to tire valve.



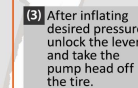
Choose correct pump valve.



Flip up the lever to securely hold the valve, then inflate.



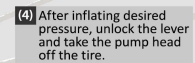
Insert pump head to tire valve.



After inflating desired pressure, unlock the lever and take the pump head off the tire.



Flip up the lever to securely hold the valve, then inflate.



After inflating desired pressure, unlock the lever and take the pump head off the tire.

Made in Taiwan