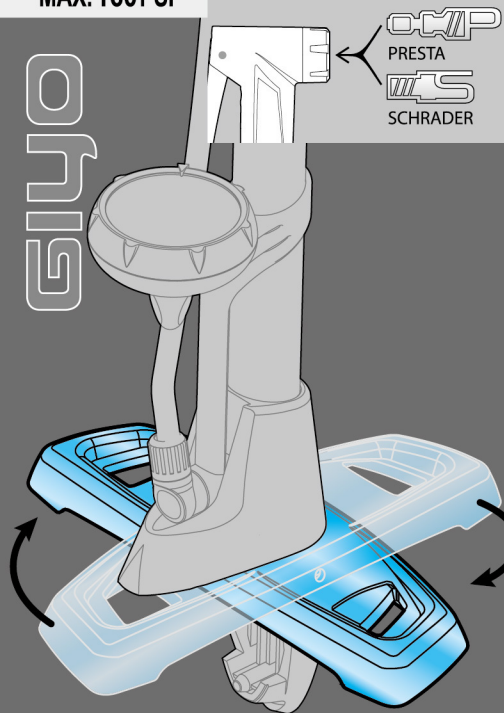




CLEVER VALVE

MAX. 160PSI

GIYO



PRESTA

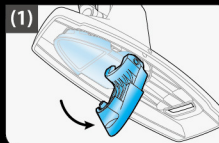
SCHRADER

GF-55B

max. 160 psi

- Rotated base for easily carrying and storage
- 2.5" gauge
- Clever Valve: Automatically change for Presta and Schrader.

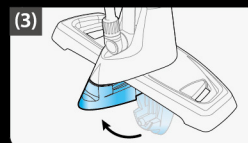
INSTRUCTION



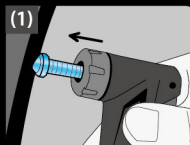
(1) Lift up the base fixing lever



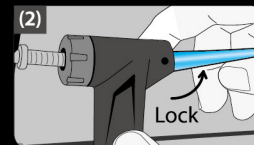
(2) Rotate the base 90°



(3) Press the lever to fix the base



(1) Insert pump head to tire valve.



(2) Flip up the lever to securely hold the valve, then inflate.

(3) After inflating desired pressure, unlock the lever and take the pump head off the tire.

Made in Taiwan