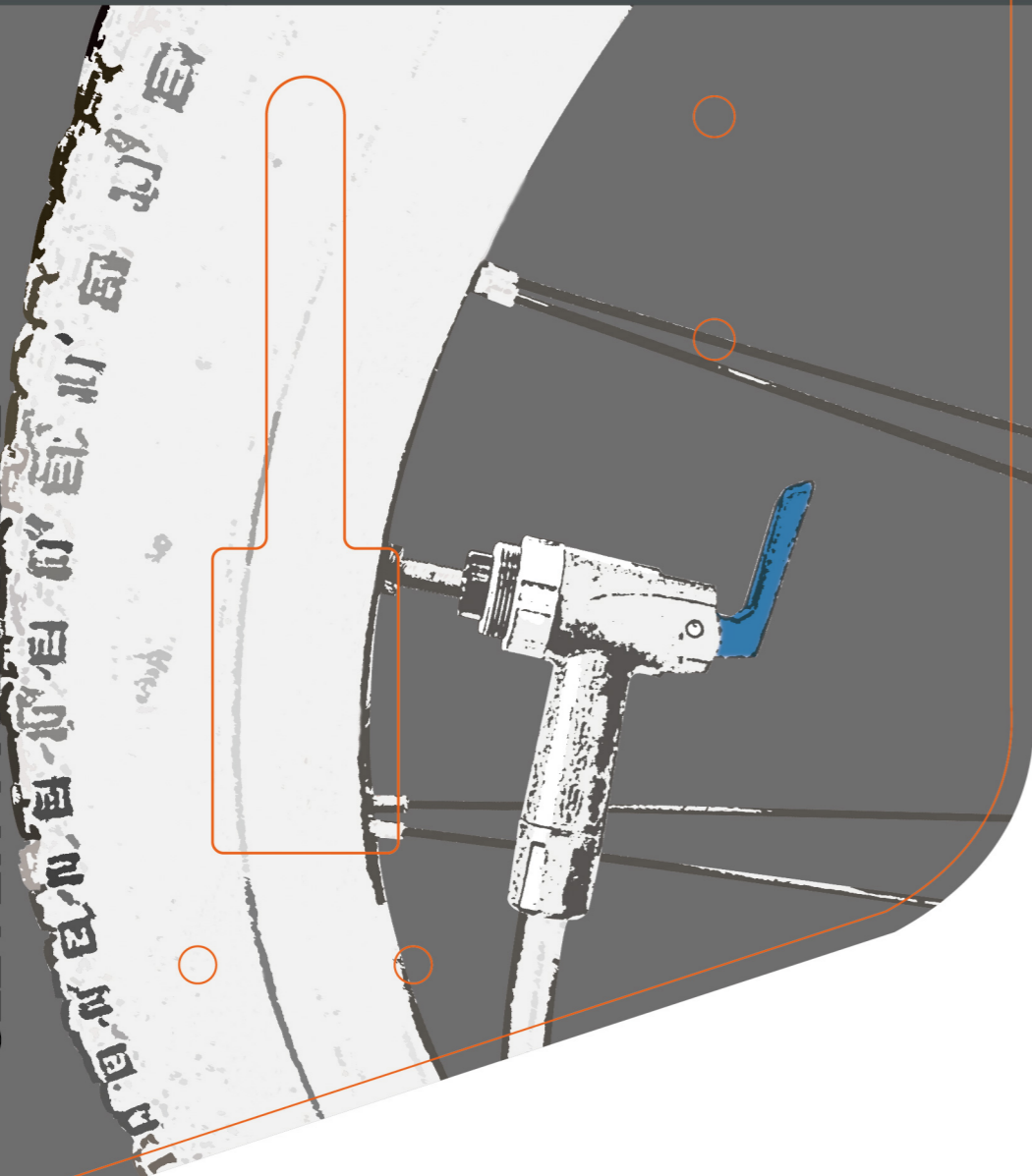




DUAL-SCALE GAUGE ALUM PUMP

40/160PSI

CLEVER-TWIN-VALVE



GF-2632

40psi/160psi

Dual-Scale Gauge display for Low pressure and High pressure
0~40psi zone: 1psi digit gap, special « for FAT tire, MTB and Gravel bike tire

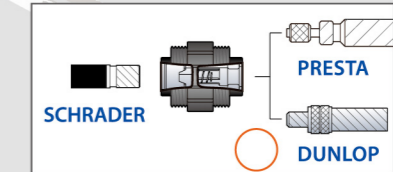
40~160psi zone: Fit for Road bike tire « 3" big gauge • Alum barrel • Clever-Twin-Valve for Presta, Schrader and Dunlop

GF-6227

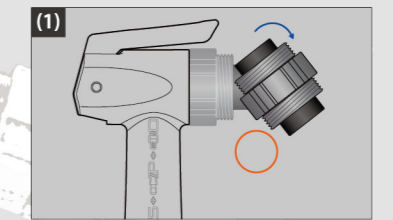
40psi/160psi

Dual-Scale Gauge display for Low pressure and High pressure
0~40psi zone: 1psi digit gap, special « for FAT tire, MTB and Gravel bike tire
40~160psi zone: Fit for Road bike tire « 2.5" Top-Mounted gauge • Alum barrel • Clever-Twin-Valve for Presta, Schrader and Dunlop

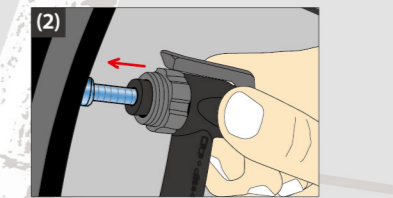
INSTRUCTION



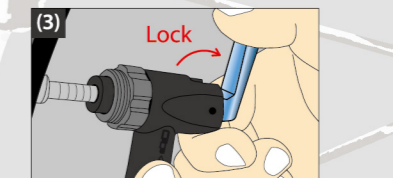
▲ Clever-Twin-Valve



Choose correct pump valve.



Insert pump head to tire valve.



Flip up the lever to securely hold the valve, then inflate.

(4) After inflating desired pressure, unlock the lever and take the pump head off the tire.

Made in Taiwan