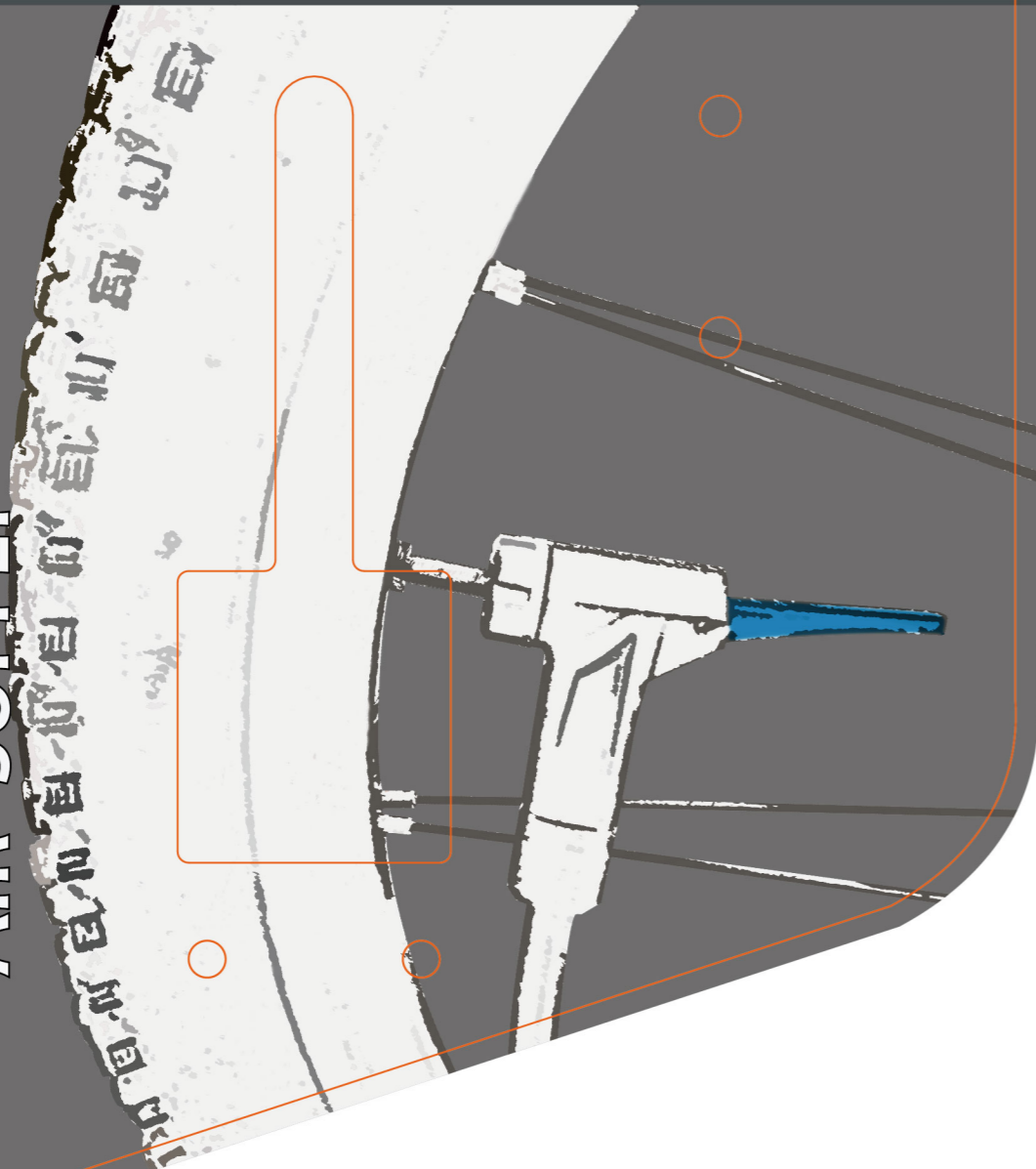




# 3" BIG GAUGE FLOOR PUMP

MAX. 180PSI

AIR SUPPLY

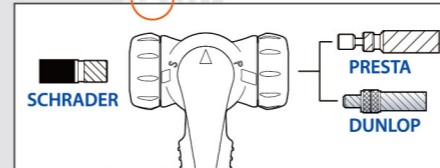


### GF-2630

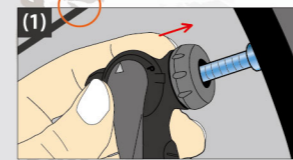
max. 180 psi

- Oversized 3" big gauge
- Twin-Valve with Thumb-Lock lever

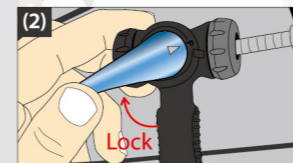
#### INSTRUCTION



#### ▲ Twin-Valve



(1) Choose correct pump valve and insert it to tire valve.



(2) Push lever toward tire valve's other direction to lock, then inflate.

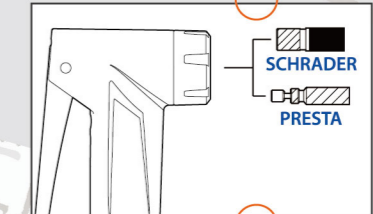
(3) After inflating desired pressure, unlock the lever and take the pump head off the tire.

### GF-2730

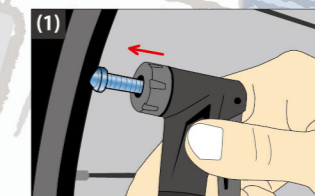
max. 180 psi

- Oversized 3" big gauge
- Clever Valve: Automatically change for Presta and Schrader

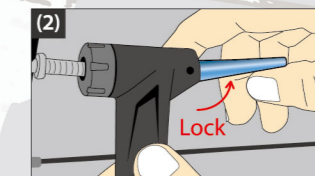
#### INSTRUCTION



#### ▲ Clever Valve



(1) Insert pump head to tire valve.



(2) Flip up the lever to securely hold the valve, then inflate.

(3) After inflating desired pressure, unlock the lever and take the pump head off the tire.

Made in Taiwan