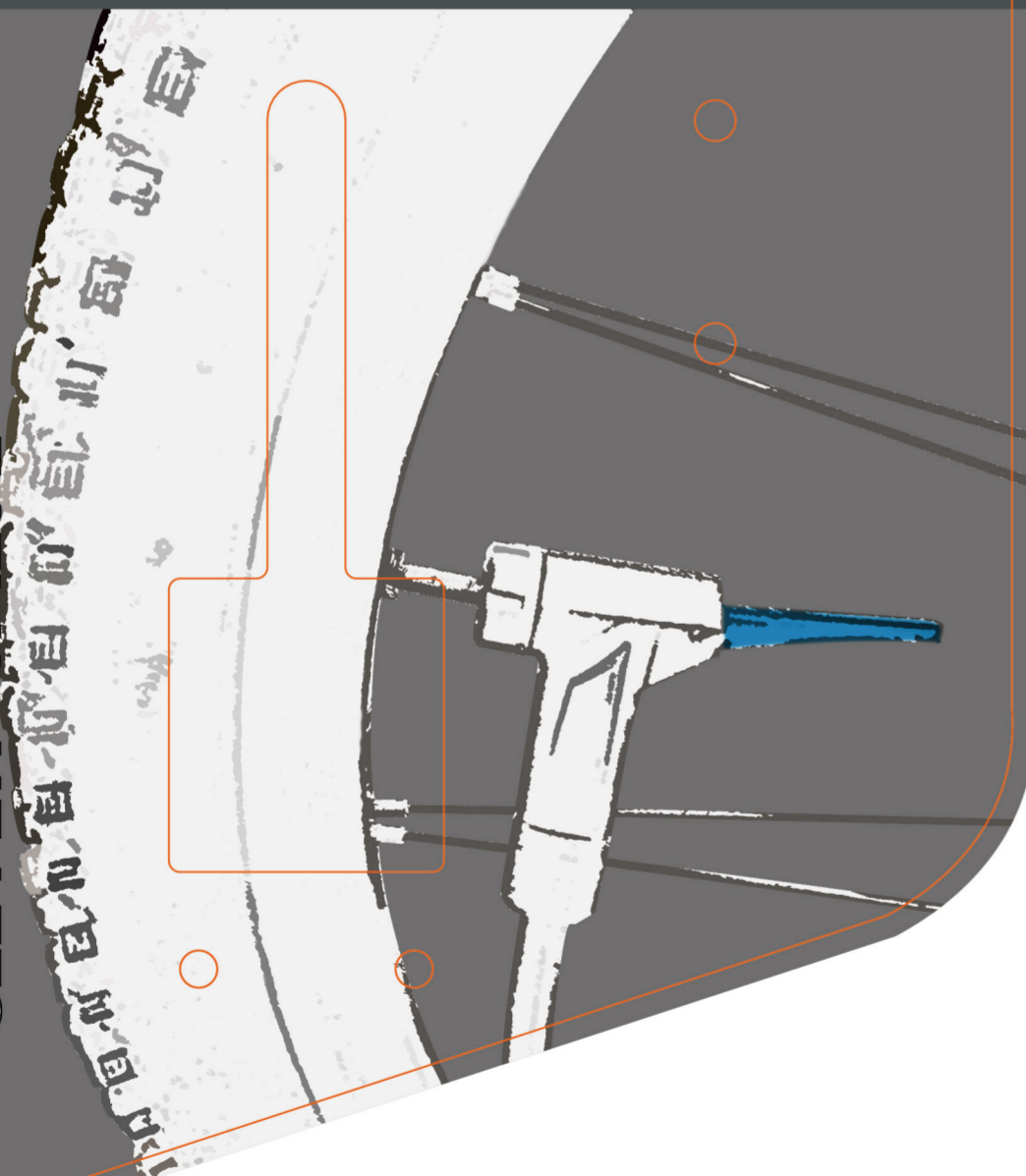




# 3" BIG GAUGE FLOOR PUMP

MAX. 180PSI

CLEVER VALVE



### GF-2330

max. 180 psi

Oversized 3" big gauge for reading clearly •  
Clever Valve: Automatically change •  
for Presta and Schrader

### GF-2430

max. 180 psi

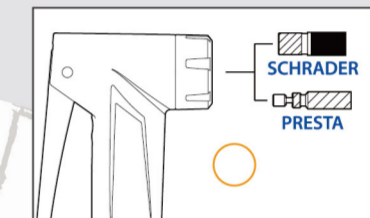
Aluminum barrel •  
Oversized 3" big gauge for reading clearly •  
Clever Valve: Automatically change •  
for Presta and Schrader

### GF-2530

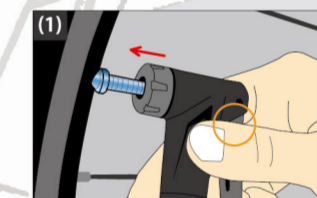
max. 180 psi

Oversized 3" big gauge for reading clearly •  
Clever Valve: Automatically change •  
for Presta and Schrader

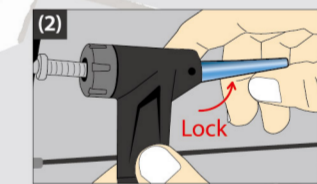
### INSTRUCTION



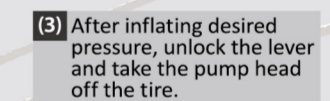
▲ Clever Valve



Insert pump head to tire valve.



Flip up the lever to securely hold the valve, then inflate.



After inflating desired pressure, unlock the lever and take the pump head off the tire.

Made in Taiwan