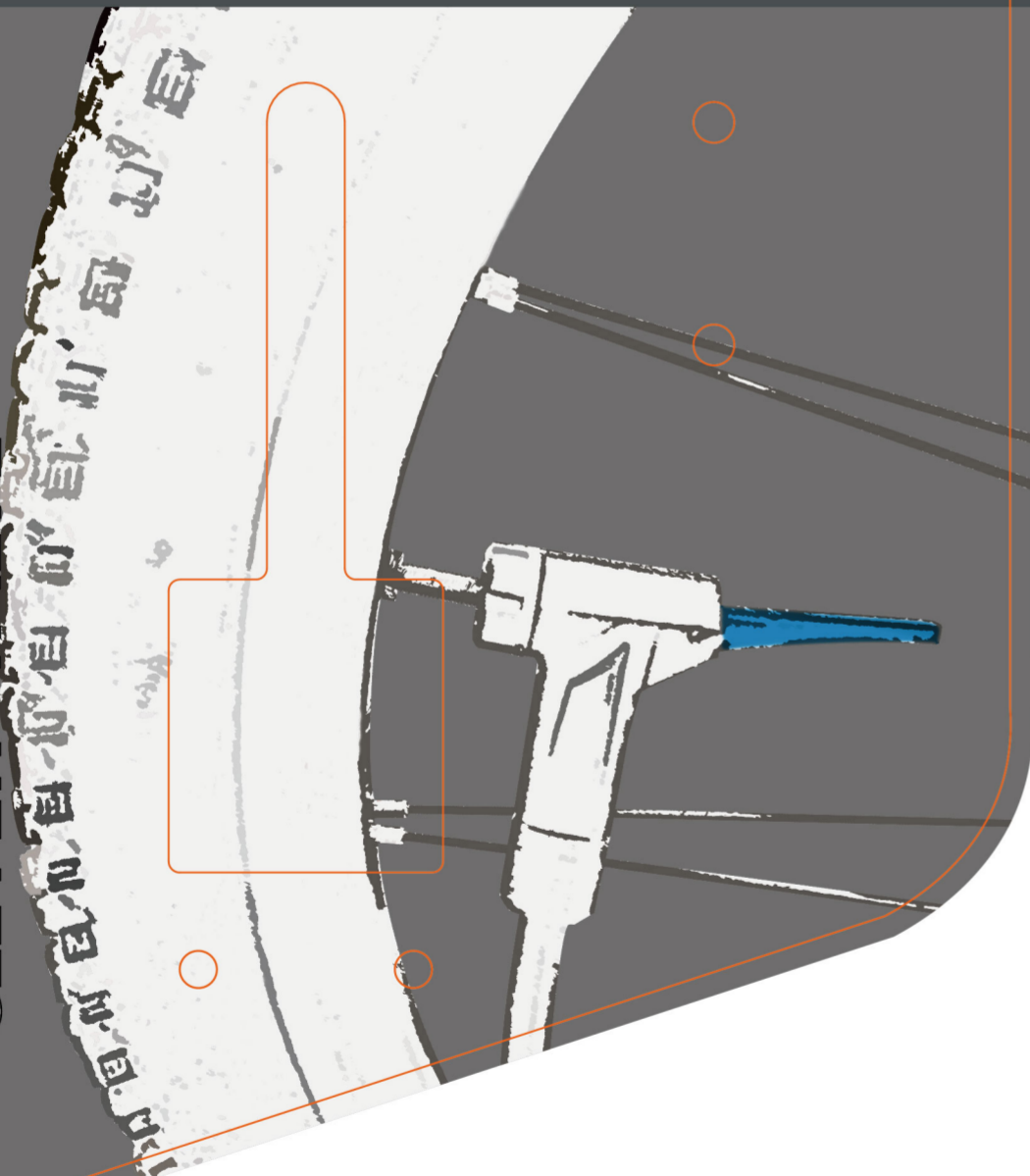




# GIYO

## 3" DUAL-SCALE GAUGE FLOOR PUMP MAX. 30/160PSI

# GIYO CLEVER VALVE



# GIYO

## 3" DUAL-SCALE GAUGE FLOOR PUMP

**GF-2332**  
max. 30/160 psi

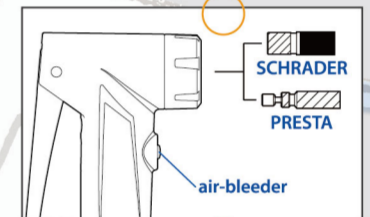
Dual-Scale Gauge display for Low • pressure and High pressure:  
0~30psi zone: 0.5psi digit gap, special « for FAT/MTB tire  
30~160psi zone: Fit for TREKKING/ROAD tire «  
3" Big gauge •  
2-Tone handle •  
Clever Valve: No more reverse for Presta and Schrader  
With air-bleeder •

**GF-2432**  
max. 30/160 psi

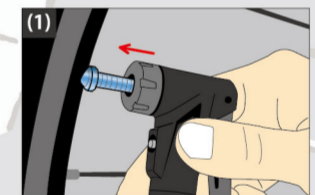
Dual-Scale Gauge display for Low • pressure and High pressure:  
0~30psi zone: 0.5psi digit gap, special « for FAT/MTB tire  
30~160psi zone: Fit for « TREKKING/ROAD tire  
3" Big gauge •  
2-Tone handle •  
Aluminum barrel •  
Clever Valve: No more reverse for • Presta and Schrader  
With air-bleeder •

Made in Taiwan

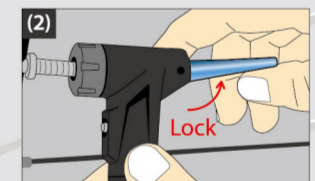
### INSTRUCTION



▲ Clever Valve



Insert pump head to tire valve.



Flip up the lever to securely hold the valve, then inflate.

(3) After inflating desired pressure, unlock the lever and take the pump head off the tire.