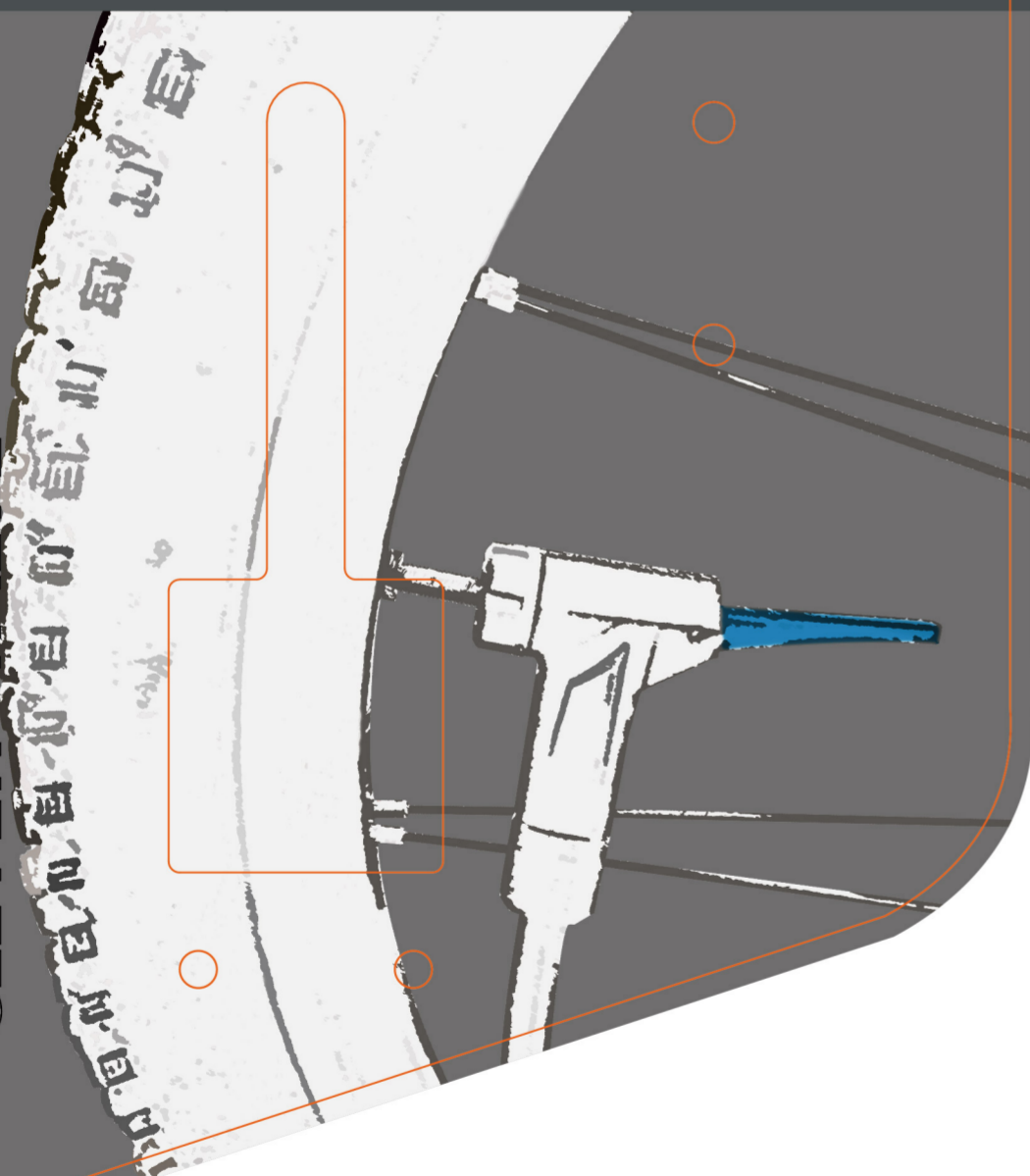




3" BIG GAUGE FLOOR PUMP

MAX. 180PSI

CLEVER VALVE



GF-2330
max. 180 psi

Oversized 3" big gauge for reading clearly •
Clever Valve: Automatically change •
for Presta and Schrader

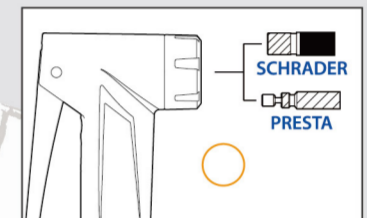
GF-2430
max. 180 psi

Aluminum barrel •
Oversized 3" big gauge for reading clearly •
Clever Valve: Automatically change •
for Presta and Schrader

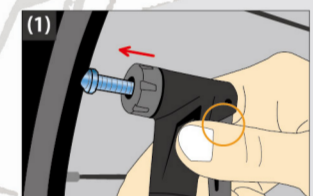
GF-2530
max. 180 psi

Oversized 3" big gauge for reading clearly •
Clever Valve: Automatically change •
for Presta and Schrader

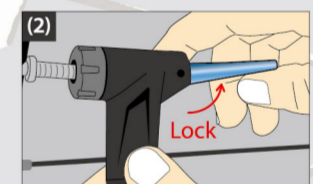
INSTRUCTION



▲ Clever Valve



Insert pump head to tire valve.



Flip up the lever to securely hold the valve, then inflate.

(3) After inflating desired pressure, unlock the lever and take the pump head off the tire.

Made in Taiwan