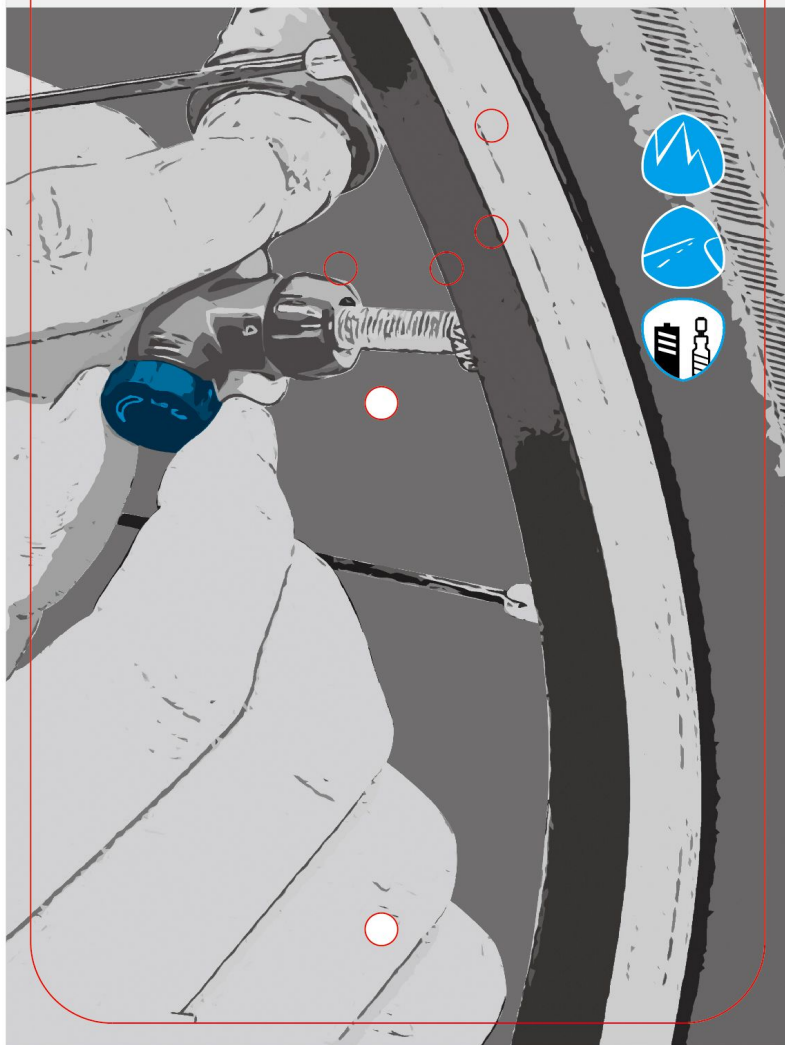


# GIYO

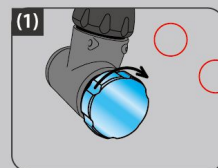
## CNC ALUM MICRO CO<sub>2</sub> INFLATOR



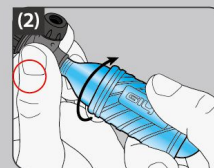
### GC-08CD

- Precision Gas Control: Prevent premature CO<sub>2</sub> leakage upon cartridge insertion
- CNC Aluminum inflator body
- Control cap easy to control air flow
- Fit for CO<sub>2</sub> cartridge w/thread
- Fit for Presta and Schrader

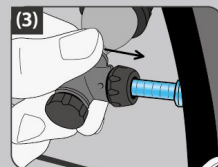
### INSTRUCTION



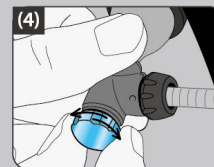
(1) Before using, make sure the control cap is locked.



(2) Screw on the cartridge to the end to punch it.



(3) Engage into the tire valve.



(4) Adjusting volume by twisting the control cap.

### CAUTION

1. If CO<sub>2</sub> cartridge still charged with gas, it must discharge completely the CO<sub>2</sub> cartridge before removal.
2. When opening the CO<sub>2</sub> cartridge, point the inflator head away from yourself and others.

Made in Taiwan